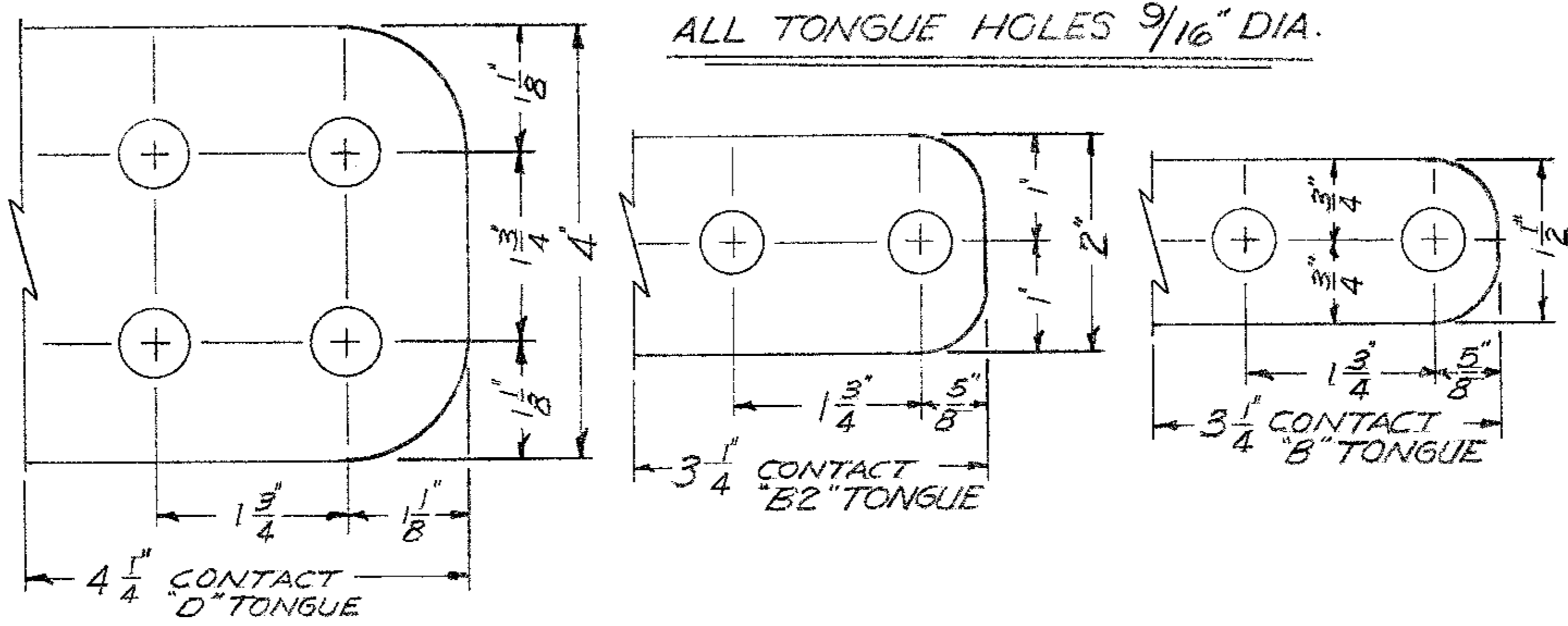
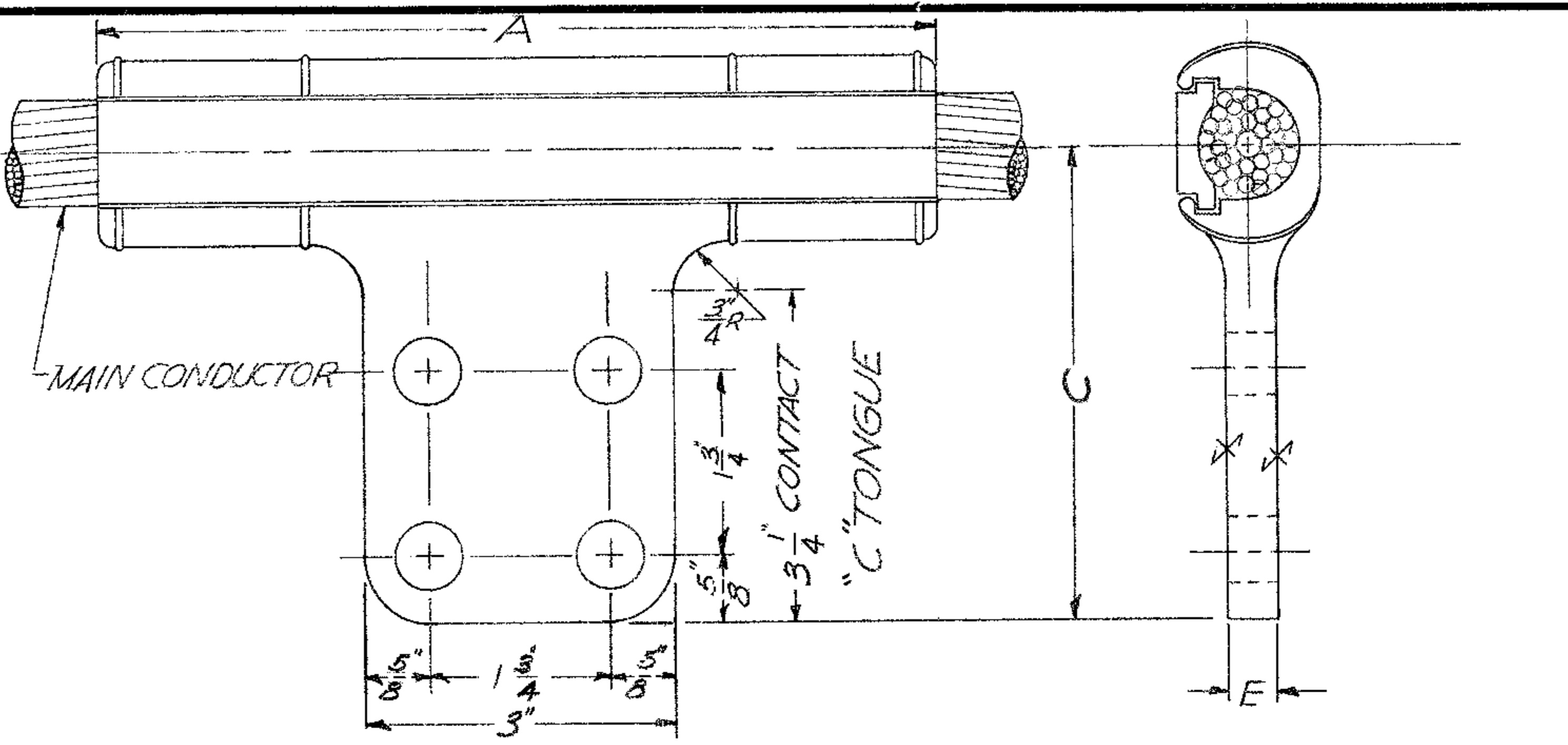


10-20-76 R/7 JJS
CC-4872 WAS CC-1280

REVISIONS	NO.	DATE	DESCRIPTION	BY
	4	10-28-65	DIE REF. 075C WAS 1.62'S	BS
	5	11-12-65	Add BCTCF030C	DS
	6	2-21-65	Add 050-BE	OS

REVISIONS	NO.	DATE	DESCRIPTION	BY
	1	9-11-64	ADDED BCTCF-075, 050, 025	MM
	2	4-29-65	ADDED SH. 2 - BCTCF-022-B	MM
	3	8-20-65	ADDED SH. 2 - BCTCF-075-AR-DS	DS



ALL TONGUE HOLES 9/16" DIA.

NOTES:

1. MATERIAL - BODY & SLIDE - #950 COPPER ALLOY
2. FOR CRIMPING TOOLS & DIES REFER TO DIE REFERENCE & MATCHING DIE REFERENCE ON INDEX SHEET CC-4872.

DATE	NO.	CATALOG NUMBER	MAIN CONDUCTOR SIZE & STRANDING	DIE REF.	DIMENSIONS IN INCHES		
					A	C	E
9-11-64	1	BCTCF-100-C	1000 MCM - 61 STR.	1.843	12 1/2	4 15/16	1/2
4-29-65	2	BCTCF-075-C	750 MCM - 61 STR.	1.500	12	4 3/4	1/2
		BCTCF-050-C	500 MCM - 37, 61 & 91 STR.	1.312	10	4 1/16	3/8
		BCTCF-025-B	250 MCM - 19, 37 & 61 STR.	1.125	8 5/8	4 9/16	3/8

REV. 17

DATE 12-30-63
APPROVED JAF
SCALE DO NOT

COPPER COMPRESSION TEE
CABLE TO FLAT

ANDERSON ELECTRIC CORP.
BIRMINGHAM ALABAMA
CAT. NO. BCTCF-TAB DWG. NO. C-5603

REVISIONS	DATE	NO.	DESCRIPTION	BY	CATALOG NUMBER	MAIN CONDUCTOR SIZE & STRANDING	DIE REF.	DIMENSIONS IN INCHES		
								A	C	E
					BCTCF-022-B	2/0-7 STR. - 2/0-19 STR.	1.000	8	4 1/2	3/8
					BCTCF-075-B2	750 MCM	1.500	11	4 3/4	5/8
					BCTCF-030-C	300-19, 37, & 61 MCM	1.125	10	4 9/16	3/8
					BCTCF-050-B2	500-37 500-61 500-91 MCM	1.312	10	4 1/16	1/2
					BCTCF-100-B2	1000 MCM 61 STR.	1.843	12 1/2	4 15/16	5/8
					BCTCF-021-B	1/0-7, 1/0-19 MCM	.840	8	4 27/64	3/8
					BCTCF-025-C	250-19, 250-37, 250-61 MCM	1.125	10	4 9/16	3/8
					BCTCF-019-B	#1-7, #1-19 MCM	.840	8	4 27/64	3/8
					BCTCF-025-B2	250-19, 250-37, 250-61 MCM	1.125	10	4 9/16	3/8
					BCTCF-060-C	600-37, 600-61 MCM	1.500	12	4 3/4	1/2
					BCTCF-060-D	600-37, 600-61 MCM	1.500	12	5 3/4	7/16
					BCTCF-024-C	4/0-7 STR 4/0-19 STR	1.125	10 1/8	4 9/16	3/8
					BCTCF-018-B	#2-7, #2-19 MCM	.840	8	4 27/64	3/8
					BCTCF-035-B	350-19 STR.-37 STR. OR 61 STR. MCM	1.312	10	4 5/8	7/16
					BCTCF-035-C	350-19 STR.-37 STR. OR 61 STR. MCM	1.312	10	4 5/8	1/2

REVISIONS	DATE	NO.	DESCRIPTION	BY
	10-11-68	9	ADDED BCTCF-025-C	C.W.
	10-13-69	10	ADDED BCTCF-019-B	C.W.
	10-31-69	11	ADDED BCTCF-025-B2	R.H.
	5-18-67	7	ADDED 100-B2	J.S.
	8-8-67	8	ADDED 21-B, ROUNDED	C.W.
	8-8-67	8	TONGUES	C.W.

9-8-09	17	ADDED BCTCF035C EC 32578	MTF	REV. 17
4-21-81	16	ADD BCTCF-035-B	JVS.	

DATE	4-29-65	COPPER COMPRESSION TEE	ANDERSON ELECTRIC CORP.
CKD BY		(CABLE TO FLAT)	LEEDS ALABAMA
APPROVED			CAT. NO. BCTCF-TAB. DWG. NO. C-5603
SCALE	DO NOT		